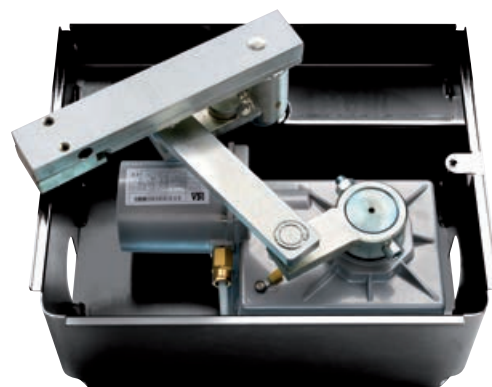


GHOST 200

Electromechanical underground automations for swing gates



NET230N 230V a.c. operators without control board

COD.	Art.			OTHER CHARACTERISTICS
621000	200	• •		Underground operator with connection lever
621040	200CL	• •		Underground operator with connection lever and complete with 8 m of cable
621010	200L	• •		Underground operator with connection lever, slow version
621060	200/EN	• •	•	Underground operator with connection lever and encoder
621070	200/CLEN	• •	•	Underground operator with connection lever, encoder and complete with 8 m of cable

All models have: foundation box and limit switches not included (see on page 72)

Control board to complete the installation: control board cod. 677610 art. NET230N/C (with box)

NET24N 24V d.c. operators without control board

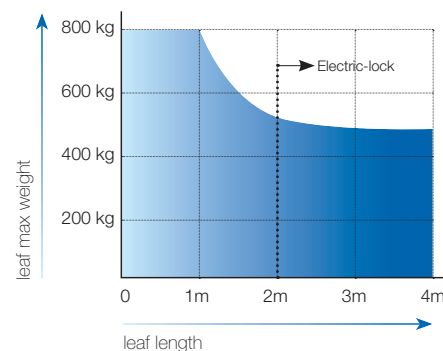
COD.	Art.		OTHER CHARACTERISTICS
621020	200/24	• • •	Underground operator with connection lever
621050	200/24CL	• • •	Underground operator with connection lever and complete with 8 m of cable

All models have: foundation box and limit switches not included (see on page 72)

Control board to complete the installation: control board cod. 678261 art. NET24N/C (with box)

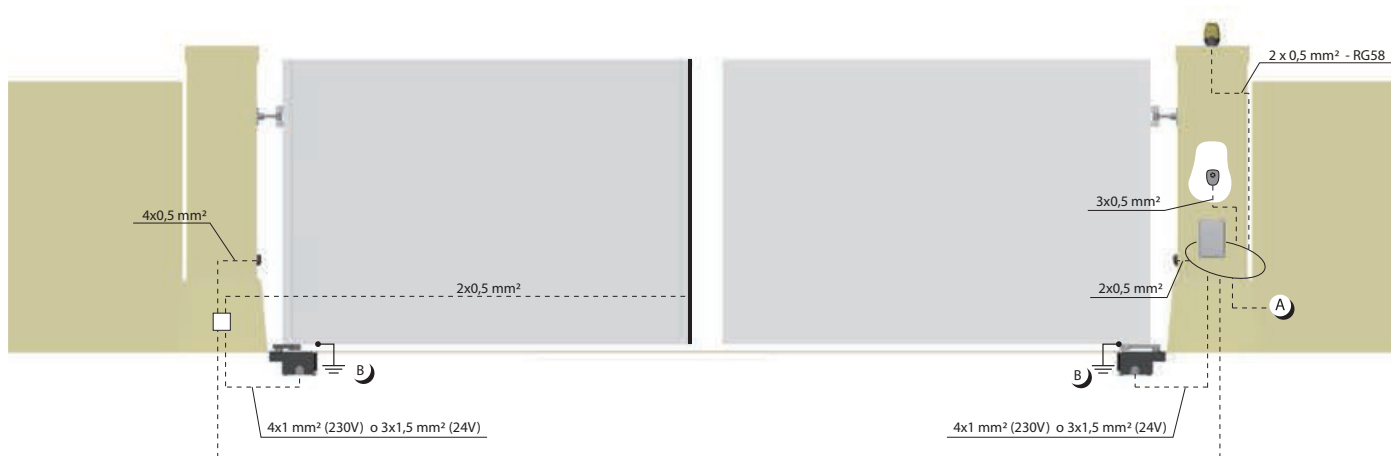
TECHNICAL INFO	200 - 200CL 200/EN - 200/CLEN	200L	200/24 200/24CL
Motor power supply (V)	230 AC ± 10 % (50/60 Hz)	230 AC ± 10 % (50/60 Hz)	24 DC
Maximum power absorption (W)	400	330	150
Max thrust (N)	320	300	210
Duty cycle (cycles/hours)	20 - 28 (vers. 200/EN)	18	40
N. max cycles in 24h.	200	200	280
Built-in capacitor (µF)	12,5	12,5	
Operating temperature (°C)	-20 ÷ 50	-20 ÷ 50	-20 ÷ 50
Motor thermal protection (°C)	150	150	/
90° Opening time (s)	17	26	16
Weight with packing (Kg)	14,5	14,5	14
Protection degree	IP67	IP67	IP67

GUIDE TO USE

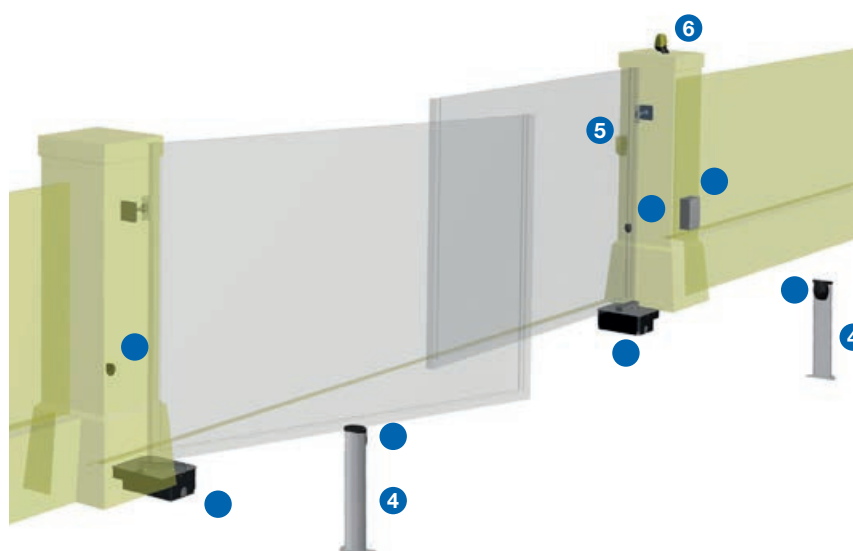


If the leaf length is bigger than 2 meters or if you use reversible models you must install the electric-lock to block the gate in closed position

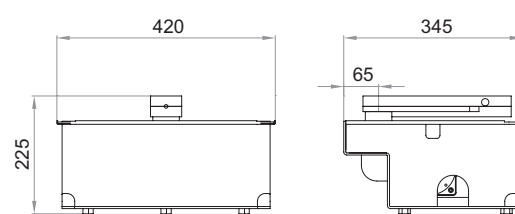
The height and the leaf structure, as well as the presence of strong wind, can cause the reduction of the value of the data contained in table.



EXAMPLE OF A TYPICAL INSTALLATION




DIMENSIONS




Cod. 629000 **Art. 215**
Foundation box with **cataphoresis** treatment complete with gate support and unlocking device



Cod. 621060 **Art. 200/EN**
Electromechanical underground operator for swing gates



Cod. 677610 **Art. NET230N/C**
Universal digital control board for 1 or 2 operators, 230V, with or without magnetic encoder (**with box**)




Cod. 662030 **Art. 104LUX**
Pair of adjustable (15°) surface mounted photocells



4 Cod. 664000 **Art. PILLY/60**
Pair of aluminium columns for photocells, height 55 cm.



5 Cod. 663030 **Art. 102LUX**
Keyswitch with two contacts, flush mounted. Supplied with 2 keys.



6 Cod. 661062 **Art. LED230AI**
Led flashing light 230V with built-in antenna 433Mhz



Cod. 672580 **Art. TR2**
Remote control
Black version art. TR2N also available (page 118)



Cod. 668010 **Art. 127**
Warning sign

SPECIFIC ACCESSORIES



Cod. 629000 **Art. 215**
Foundation box with **cataphoresis** treatment complete with gate support and unlocking device



Cod. 629010 **Art. 215I**
Stainless steel foundation box complete with gate support and unlocking device

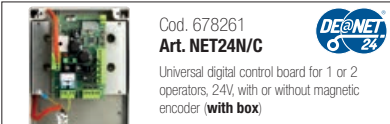


Cod. 629030 **Art. 218**
Mechanical limit switch



Cod. 629020 **Art. 216**
Device to be fixed into boxes 215 or 215I to get an opening angle up to 180°

OTHER ACCESSORIES



Cod. 678261 **Art. NET24N/C**

Universal digital control board for 1 or 2 operators, 24V, with or without magnetic encoder (**with box**)

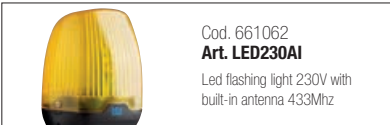


Cod. 677610 **Art. NET230N/C**

Universal digital control board for 1 or 2 operators, 230V, with or without magnetic encoder (**with box**)



Cod. 661082 **Art. LED24AI**
Led flashing light 24V with built-in antenna 433Mhz



Cod. 661062 **Art. LED230AI**

Led flashing light 230V with built-in antenna 433Mhz



Cod. 672580 **Art. TR2**

Remote control
Black version art. TR2N also available (page 118)



Cod. 672590 **Art. TR4**
Remote control
Black version art. TR4N also available (page 118)



Cod. 662020 **Art. 104MINLUX**

Pair of surface mounted photocells, Range 20 mt



Cod. 662030 **Art. 104LUX**

Pair of adjustable (15°) surface mounted photocells



Cod. 662044 **Art. LINEAR**

Pair of adjustable photocells (180°) with possibility of synchronized operating, Range 20 Mt



Cod. 662043 **Art. LINEAR/B**

Pair of adjustable photocells (180°) with tx supplied by a LiOn battery, Range 7/15 Mt



Cod. 681060 **Art. COVER**

Vandal-proof aluminium cover for art. LINEAR and LINEAR/B



Cod. 663060 **Art. KYO**

Aluminium vandal-proof keyswitch, flush mounted.



Cod. 663280 **Art. DIGIRAD**

Wireless keypad



Cod. 663270 **Art. DIGINET**

Hardwired keypad for BUS connections to MASTER devices of range DE@NET (NET24N, NET230N, MASTERNET)



Cod. 664020 **Art. PILLY/base**

Pair of fixing plates for columns to be cemented.



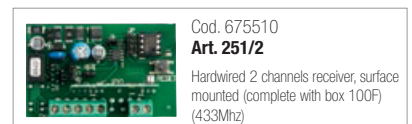
Cod. 664000 **Art. PILLY/60**

Pair of aluminium columns for photocells, height 55 cm.



Cod. 664010 **Art. PILLY/120**

Pair of aluminium columns for photocells, height 100 cm.



Cod. 675510 **Art. 251/2**

Hardwired 2 channels receiver, surface mounted (complete with box 100F) (433Mhz)



Cod. 629290 **Art. BAT**

Rechargeable batteries kit for 24V operators, 12V - 1,3Ah, complete with wiring cables



Cod. 681050 **Art. Green Energy**

Solar power kit complete with art. CHARGER



Cod. 665000 **Art. BLINDOS**

Safety enclosure to place external unlocking device handle